

DESIGN + DECOR

CONNECTICUT
NEW JERSEY
NEW YORK

FOLEY & COX
Prewar Modern
on Park Avenue

THE ANNUAL
KITCHEN ISSUE



\$7.99 US/\$8.99 CANADA



25274 23559 9

DISPLAY UNTIL 6/10/24

MAR/APR 2024



Diane Durocher Interiors

DianeDurocherInteriors.com

201.825.3832





 **ADVANCEDHOMEAUDIO**
CONNECTICUT | NEW YORK | THE HAMPTONS | SOUTH FLORIDA
203-922-0051 | ADVANCEDHOMEAUDIO.COM



*Candlelight
Cabinetry*



RingsEnd.com | 800-390-1000

f i y i n

Bethel | Branford | Darien
Lewistown | New Milford | Niantic | Wilton



Learn about our Kitchen Design Services



Your Inspiration. Our Expertise.





LARA MICHELLE

BEAUTIFUL INTERIORS, INC.

*Luxurious * Elegant * Award-Winning
Your Dream Home Journey Starts Here*

info@LaraMichelle.com | 914.939.5777
www.LaraMichelle.com



DESIGN + DECOR

VOLUME 21 ISSUE 2 - 2024

Editor-in-Chief
Matthew J. Kolk
mattkolk@me.com
203-820-1092

Contributing Writers
Deborah Brannon, Lisa Gant, Shehla Lucanera,
Alder Grove, Danielle Porter, Hunter Powell,
Meryl Siegman, Anna von Stelzer-Worth,

Contributing Photographers
Jane Beiles, Michael Biondo, Phillip Ennis, Tria Giovan,
John Gruen, John Hannon, Paul Johnson, Neil Landino,
Mark La Rosa, Tim Lee, Daniel Milstein,
Durstun Saylor, Eric Striffler, Carl Vernlund,
Jonathan Wallen, Woodruff/Brown Photography

Copy Editor
Elena Serocki

Graphic & Web Design
East Coast Home Publishing

Group Publisher
Shelley E. McCormick
sm@dd-mag.com
203-545-7091

Northeast Account Manager
Janine Vairo
jv@dd-mag.com

Design + Decor
349 Forest Hills Boulevard
Naples, Florida 34113

Design + Decor is published six issues per year. To subscribe: www.dd-mag.com; Back issues can be purchased at www.dd-mag.com. For editorial inquiries: Editor, Design + Decor, 349 Forest Hills Boulevard, Naples, Florida 34113 or e-mail: mattkolk@me.com. For advertising inquiries: Please call Shelley McCormick at 203-545-7091. Reproduction whole or in part without permission is prohibited. All projects described in this publication are for private, noncommercial use only. No rights for commercial use or exploitation are given or implied. The opinions expressed by writers for articles published by Design + Decor are not necessarily those of the magazine.

EAST COAST HOME PUBLISHING
349 Forest Hills Boulevard
Naples, Florida 34113
DD-MAG.COM



KAREN BERKEMEYER HOME

175 Post Road W, Westport, CT 06880
203.454.0032 • karenberkemeyerhome.com





Handcrafted in New Hampshire

Custom cabinetry
for every room in your home

CROWNPOINT
CABINETRY

800-999-4994 • www.crown-point.com

Available direct, nationwide

Work with one of our
in-house design professionals

DESIGN + DECOR

CONNECTICUT
NEW JERSEY
NEW YORK

VOLUME 21 ISSUE 2 | 2024



25 THE COSMOPOLITAN CONDO

A renovation elevates a condominium
to a new level in Bala Cynwyd.

Story by Meryl Siegman | Photography by Mike Van Tassell



38 THE DESIGNATED KITCHEN

2024 ANNUAL KITCHEN ISSUE

Stories by Shehla Lucanera



86 PREWAR MODERN ON PARK AVENUE

A Collaboration for the Ages

Story by Danielle Porter | Photography by Bjorn Wallander

DEPARTMENTS

8 Editor's Letter
12 Ask the Experts
102 Profile

10 Melange
18 In the Field



The Rath Project

Making home beautiful, one Project at a time.

www.TheRathProject.com | 518-542-6268

office@therathproject.com

EDITOR'S LETTER



Keeping It Fresh

We all crave happiness, and one place to start is with design.

We thought it was time to come up with a few changes in our book design, as we like to keep things fresh. When you've been publishing for 20 years, it's very important to evolve in order to keep your audience engaged. We're starting with the subtle change in this issue, and will be continuing through to our 20-year celebratory issue in the fall.

For this issue, our Annual Kitchen Edition, our theme is "The Dedicated Kitchen." We asked interior designers: What does the dedicated kitchen mean to you? How do you design the space to meet all the needs of your clients? How does it become a place where imagination and functionality reach new heights? Learn what our industry peers revealed to us on the subject.

We're excited to share a very special feature story that was provided to us by Foley & Cox Interiors. It is about a prewar apartment that, over time, was combined with another unit to create the ultimate dream home for a family of four. While working with one of the principals on this project, Michael Cox, we learned that this issue comes out in his birthday month. Happy Birthday, Michael! We hope you enjoy your cover!

And, to our esteemed readers, we hope you enjoy and are inspired by this issue!

Matthew J. Kolk
Editor-in-chief

MAKE ROOM FOR ALL OF YOU



CALL, VISIT A SHOWROOM, OR FIND US ONLINE TO SCHEDULE YOUR COMPLIMENTARY DESIGN CONSULTATION

New York City

26 Varick St | 1629 York Ave

646.486.3905

Westchester

16 Saw Mill River Rd, Hawthorne

914.592.1001

Connecticut

565 Westport Ave, Norwalk

203.924.8444



@caliclosetsnyc



CALIFORNIACLOSETS.COM

CALIFORNIA CLOSETS®

MELANGE



Woodbine Rectangular Chandelier
Tom Caldwell's inspiration for the design of the Woodbine Rectangular Chandelier was to take a natural style story and make it modern. He envisioned the utilitarian linear brown chandelier with a decided modern farmhouse feel as perfect for hanging over a bar or a long kitchen island. The wood slats of the handsome chandelier gain their u-shape from the horseshoe-like metal bands that fasten them together. The warm chestnut finish on the wood and brass finish on the metal bring this long, narrow chandelier an industrial vibe.
curreyandcompany.com



Troy Azar
French Riviera finesse meets mid-century modernism in the Azar pendant. The large drum shade is wrapped entirely in Bleached Abaca cord, allowing light to shine through. Finished in Vintage Gold Leaf, the angular frame takes its cues from vintage iron lighting as it peaks out from under the shade. Available in two sizes with either 4 or 6 lights, Azar provides a sophisticated lighting experience.
hvlgroup.com

You Light Up My Life

The perfect pendant for your
kitchen renovation



Jolana Pendant
Fabric shades have a soft look that never seems to go out of style, and Jolana takes inspiration from these refined classics. A delicately textured fabric shade contrasts decoratively against the smooth pill-shaped metal framework. Inside the arms, LED clusters radiate light, creating a beautiful glow
kichler.com



Pierrepont White Pendant
Our Pierrepont White Large Pendant is made of wrought iron with a gesso white finish on its exterior and a contemporary gold leaf finish on the interiors of the shades. The rings connecting them gleam in a painted gold finish. There are a number of other sizes and finishes in the Pierrepont family of fixtures. curreyandcompany.com

Ciri

Large LED Pendant with White finish and Champagne Gold accent offers a soft-modern take on a classic cage-pendant. This contemporary collection features delicate circles of LED lights that are hidden within the fixture, creating an invisible light source that fills the circles with light for an airy feel. This beautiful pendant pairs well with mid century, urban, retro, and modern styles kichler.com



Denison Rectangular Black Lantern

Our Denison Rectangular Lantern is a hammered wrought-iron fixture in a Mole Black finish. The classic lantern shape has stood the test of time to make it one of our most popular offerings. A design element of note are the rectangles that fasten the lantern to the chain. This rectangular black lantern is one of a number of sizes and finishes in the Denison family. curreyandcompany.com





THE ELEVATED KITCHEN: TIPS AND TRENDS FOR A MODERN KITCHEN

Story by Danielle Porter

Alba Stone

The heart of the home deserves a touch of brilliance, and if you're planning a kitchen refresh, you won't want to miss these tips and trends for 2024. Design + Decor met with local leading experts and asked about the latest and greatest in appliances, flooring, counter-tops and more to help elevate your culinary experience.

Appliances

D+D: What are the latest, most popular trends in kitchen design and gadgets?

Fred Albano | Albano Appliance

From a design perspective, contemporary is back. Sleek cooktops, wall ovens—they're making a comeback. Kitchen workstations are also big, with cutting boards and colanders. They go from prep to serving space to sink with ease.

Tony Aitoro | Aitoro Appliance

We're seeing a lot of interest in the monogram pizza oven and hearth ovens. They bring a new atmosphere to kitchens and an element of interest.

D+D: What is the latest in beverage stations?

Fred Albano | Albano Appliance

We've been doing a lot with Zip Water—it's out of Australia, and it does hot water, chilled water and even sparkling. It's an independent faucet next to your primary sink faucet, with those integral solutions.

Tony Aitoro | Aitoro Appliance

Zip Water has a lot of traction. It provides our client with instant, filtered boiling, chilled or sparkling water. It has finishes that work with every-

thing, and offers an elevated experience for our clients.

D+D: Who are the leading manufacturers for appliances with app connectivity? What features do you look for?

Fred Albano | Albano Appliance

We're seeing app-enabled appliances grow in popularity. Anything, including wall ovens and cooktops, can be Wi-Fi enabled and monitored. No one manufacturer truly stands out yet, but we really like the models that keep safety in mind—like the wall ovens and stoves with integral cameras, so you can keep an eye on things when you're not present.

D+D: Is the microwave a thing of the past? What does the future hold?

Fred Albano | Albano Appliance

In our humble opinion, if you aren't putting a steam oven in your kitchen, you're doing yourself a disservice. We're seeing a movement away from microwaves; they dehydrate your food. A steam oven puts the moisture back in. Some models also operate as convection ovens—it's a really brilliant solution. If we do see microwaves, the drawer or drop-down door models have taken over a bulk of the market.

Tony Aitoro | Aitoro Appliance

While steam ovens have increased in popularity because many of them have a broiler function, we're still seeing microwaves in most kitchens.

D+D: Where else do clients use multifunction tap faucets besides the kitchen?

Fred Albano | Albano Appliance

We're installing these in master bedrooms and family rooms quite often.



Hydrotap Arc Plus

They eliminate plastic bottles and even the glass Perrier bottles because of the sparkling option.

Tony Aitoro | Aitoro Appliance

We're seeing these everywhere—home offices, theater and bonus rooms, and even master bedrooms. There's really no place it can't be incorporated. While it requires plumbing to get to it, it takes up minimal space, which gives it the ultimate versatility in terms of where you put it.

D+D: We're hearing a lot about wood-fired cooktops and stoves. Are you seeing these rise in popularity?

Alyce Wittus | Wittus

These stoves are quite popular. We see them requested a lot for older demographics, but also in younger families who want to experiment with them. Clients often say they not only make cooking feel like a more natural experience compared to a traditional cooktop, but the food tastes better. They're great in the kitchen, but also work really well in a kitchen-and-dining combo space. They become the center point of gathering—people can't help but gravitate to the warmth (and food) of the cookstoves.

D+D: Are you seeing any trends within this niche product category?

Alyce Wittus | Wittus

A contemporary aesthetic is in. In fact, we don't carry some of the more traditional or old-fashioned styles because people want something that fits with the aesthetic of their kitchen, which right now is trending contemporary.

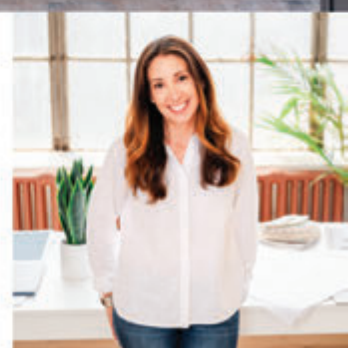


LAUREN VALLARIO DESIGNS



FULL SERVICE INTERIOR DESIGN STUDIO

laurenvallariodesigns.com | 845-654-1888 |  laurenvallario.designs



D+D: If someone wants a wood-fired cooktop or stove in their kitchen, what should they know about maintenance?

Alyce Wittus | Wittus

It's certainly easier to handle than a traditional wood fireplace, and it has relatively smooth surfaces, making the cookstove easily cleanable. In fact, there is a trick for cleaning the ceramic glass that we like to share. Take a paper towel with a little warm water on it, dip it in the soot, then rub that on the glass. It cleans it immediately! We recommend doing that once a week to keep things looking crisp. We also tell people, though it might seem counterintuitive, to leave a couple inches of ash on the floor of the fireplace to keep the fire brick from getting too hot—this also makes it easier to start the fire.

D+D: Is it easy to get the hang of using a wood-fired cooktop or stove, operationally?

Alyce Wittus | Wittus

It takes a little getting used to because, instead of just selecting a temperature, you're controlling it with the fire. That being said, there is an integral thermometer that you use to help regulate everything.

Countertops

D+D: What are the best low-maintenance countertops for kitchens?

Agim Thaqi | Alba Stone

Quartz or porcelain are great options, especially for people with families and children. Both of these have great anti-staining properties, which makes for a long-lasting aesthetic finish!



AUSTIN GANIM LANDSCAPE DESIGN, LLC



Design • Installation • Maintenance • Seasonal Decor
203.333.2003 • AustinGanimLandscapeDesign.com

Licensed & Insured: B-2036, HIC.0602611, HIC.0602612, S4820, WC-25835-H13



Interstate Lakeland + Lumber

D+D: What nature-inspired tones are you seeing in countertops?

Agim Thaqi | Alba Stone

We're seeing a lot of blues and greens in natural stones. The blues tie into the ocean vibe, and the green is earthy. Each client has his or her individual vision they are going for, but these two are popular.

D+D: What aesthetic styles and materials are popular?

Agim Thaqi | Alba Stone

Marble is timeless, particularly in a honed or matte finish. We're also seeing Belvedere quartzite, White Vermont leathered marble, Taj Mahal leathered quartzite, and Jet Mist leathered granite rise in popularity. These are great for both indoors and outdoors, giving a consistent aesthetic between the spaces.

Hardware

D+D: What finish is timeless for kitchen hardware?

Ben Kahan | Interstate Lakeland + Lumber

Brushed bronze finishes are forever timeless—they add warmth and elegance to any aesthetic. Polished nickel is another great finish, and we find that any bronze-based metal alloy with applied finishes looks authentically aged—which never goes out of style.

D+D: What are some trends in kitchen hardware that can elevate a kitchen?

Ben Kahan | Interstate Lakeland + Lumber

In terms of finish, mixed metals—like a warm brass with black—give a sophisticated and elegant look, with a touch of warmth. Polished nickel also mixes well with brasses or black to create some beautiful combinations; when you add in some unique textures, you can create a unique aesthetic that's still on-trend. We love backplates behind pulls and knobs for a dramatic effect, as well as vintage details and shapes. This brings an heirloom quality to cabinetry. As always, there is still a client base interested in a simple, clean and even minimalist aesthetic. It does not matter which direction people go—above all else, it's important to test it out and know how it functions and feels in your hand.

D+D: Would you suggest mixing pulls and knobs? Why?

Ben Kahan | Interstate Lakeland + Lumber

Mixing pulls and knobs is all about proportion and ratio of pull to drawer or cabinet size. Utilizing the same style and finish in both pulls and knobs creates a harmony and interest throughout, ultimately elevating the entire finished look of the cabinets.

MORANO GROUP LANDSCAPE + HARDSCAPE



Morano Group Landscapes + Hardscapes

is a family owned and operated premier, full service exterior company based in Mamaroneck, NY. We offer superior products and services such as design, development, maintenance, masonry, interior plantscapes, organic tree and shrub care, mature tree installation, holiday decor, pot and container plantings, poolside landscapes and more for commercial and residential properties.



543 Halstead Avenue
Mamaroneck, NY 10543
914.698.4065

Flooring

D+D: How do you determine the shade of the floor, based on the cabinet?

Jamie Hammel | The Hudson Company

There is no hard-and-fast rule for this, but we like to consider the harmony and contrast in the kitchen as a whole. The cabinets and floor should complement one another—we try not to have them so close so it's a mismatch, but rather create visual interest through the combination. Whether that is through a light floor with richly-hued cabinets, or a warmer or cooler color in the floor with colorful cabinetry, that comes down to each individual design aesthetic.

D+D: What color tones or aesthetics are popular?

Jamie Hammel | The Hudson Company

In addition to seeing a close to the reign of minimalism, there seems to be a desire for offbeat or historic colors—think Farrow & Ball. For a long time, very dark or very light floors for bold, graphic statement were in vogue, but recently we're seeing clients opt for warmer-hued flooring in the middle range of colors.

D+D: What are your best cleaning and maintenance tips?

Jamie Hammel | The Hudson Company

Wood floors are easier to maintain than people realize—a dust mop, a soft bristle broom or a vacuum with bristle brush remove debris before damp mopping. When damp mopping, it's important to know how the floors were finished. For floors finished with polyurethane, we recommend the Bona Hardwood Floor Cleaner. For floors finished in oil, we recommend the WOCA Natural Soap Floor Cleaner.

D+D: Is there any real disadvantage to wood flooring in the kitchen?



Cookinstack by Wittus

Finest selection of
contemporary
European stoves
and fireplaces

Eco 90
cook-stove
range



WITTUS
FIRE BY DESIGN

914.764.5679 www.wittus.com



Jamie Hammel | The Hudson Company

Big-picture wood floors do require care, so it's a commitment. On the day-to-day use and overall aesthetics, there really aren't any disadvantages. They work well with a variety of aesthetics and can be repaired and refinished, too, giving them a long life.

D+D: Which is better for the kitchen: hardwood or engineered wood?

Jamie Hammel | The Hudson Company

Both options work well in a kitchen without major difference between the two. Surprisingly, it depends more on the conditions underneath the floor. Engineered flooring can be installed directly on a concrete slab, but a solid floor must be fastened to a plywood subfloor.

Resources:

Aitoro Appliance

Tony Aitoro

401 Westport Avenue

Norwalk, CT 06851

203.847.2471

aitoro.com

Albano Appliances

Frank Albano

83 Westchester Avenue

Pound Ridge, NY 10576

914.764.4051

albanoappliance.com

The Hudson Company

Jamie Hammel

2290 Route 199

Pine Plains, NY 12567

38 East Putnam Avenue

Greenwich CT 06830

845.848.3044

thebudsonco.com

Interstate Lakeland + Lumber

Ben Kaban

247 Mill Street

Greenwich, CT

203.531.8885

interstatelumber.com

Alba Stone

Agim Thaqi

62 Viaduct Road

Stamford, CT 06907

203.658.8233

Wittus: Fire By Design

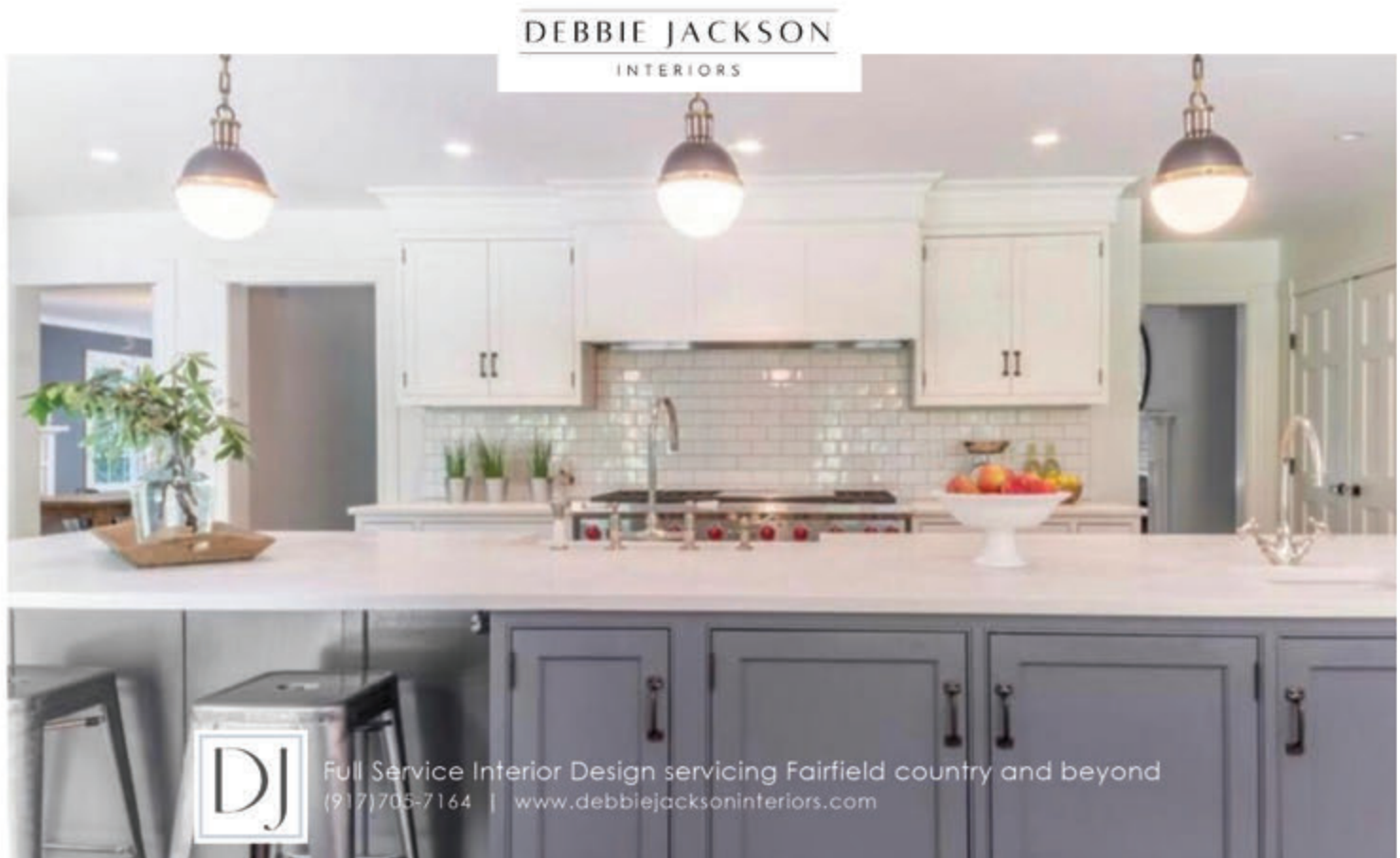
Alyce Wittus

40 Westchester Avenue

Pound Ridge, NY 10576

914.764.5679

wittus.com



HOW TO MAXIMIZE YOUR HYDRANGEA'S BLOOMING POTENTIAL

Using the right pruning techniques
can make all the difference.

Story by Eva Chiamulera

Flourishing along Connecticut's Gold Coast, the Hamptons of Long Island, and Cape Cod, Massachusetts, the hydrangea is the one plant that universally links the regional aesthetics of ornamental landscape. Whether it's used as a subtle counterpoint to boxwood in a formal garden or combined with ornamental grasses in a beachside setting, this versatile plant makes a statement in any landscape. I have been a landscape architect for more than 20 years, and the most common garden maintenance question I am asked is, "Why aren't my hydrangeas blooming?" The two most likely culprits are the weather and pruning techniques.

Each year as March approaches, with countless delicate flower buds at stake, we in the landscape industry wait to see if the lion or the lamb will persevere. This most temperamental month of weather can play a role in the success of the summer's hydrangea display. Of course, earlier winter months can also present hazards with their windchills and subzero cold snaps, but March has the added risk of warm days. Just like us, plants cannot wait for spring to arrive, and a few unseasonably warm days will prompt the hydrangea buds to swell, turn green and slowly unfurl leaf and flower buds alike. Unfortunately, all it takes is a few hours of cold weather, particularly paired with high winds, and the flower buds can freeze and eventually drop to the ground.

If your hydrangea blooms some years but not others, and you have ruled out pruning as the issue, check the light requirements for the variety to ensure it is not in too shady a spot, as this too will inhibit blooming. Be wary of overly warm microclimates that cause heat pockets, created by areas surrounded by patios, stone walls or reflective surfaces. These can radiate or reflect heat onto the plants, encouraging growth too early in the season and leaving the young buds and leaves susceptible to cold snaps in late winter and early spring. As a last resort, consider relocating your plant to a more sheltered location.

General guidelines

More often than not, however, the actual culprit to flowerless hydrangeas is how the plants were pruned. Here are a few general rules for pruning that apply to all types:

1. Remove dead stems that do not have leaves in late spring by cutting just above the highest set of leaves on the stem. It's best to wait until mid-June to do this to give the plants a little extra time to push out leaves. This is particularly important in years with tough winters, which may damage some of the leaf and flower buds.





2. Cutting stems of flowers in full bloom for bouquets is best done by using a selective and balanced approach. Step back, look at the overall shape of your hydrangea, and then try to select flowers in a relatively even distribution throughout the plant, rather than all from one area. This is not only for visual balance, but also to keep the weight of the remaining flower heads spread out across the remaining stems and branches.

3. It is beneficial to all types of hydrangeas to deadhead flowers, the practice of cutting off spent or fading flowers just below the base of the flower head, above the closest set of leaves. Removing the fading flowers lets the plant focus its energy into its roots, strengthening the stems and producing flower and leaf buds for the next season. This practice also reduces the weight on the stems, helping to reduce the risk of damage from heavy rains and snows.

4. It's preferable to cut off no more than a third of the overall canopy or height. This helps to reduce floppiness, which can sometimes result from removing too much of the plant's structure, as young stems can't support mature flowers as well. It also ensures there is a sufficient number of leaves to produce energy for the plant.

5. Try to avoid major renovation pruning or cutbacks in the fall. It's better to leave the stems longer to reduce the risk of winter injury, which would result in the need to cut the stems even



KATE GELFAND
INTERIOR DESIGN

50 Greenwich Avenue | 2nd Floor
Greenwich, CT

203.485.0413 www.kategelfand.com



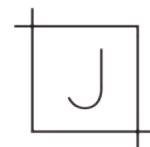
shorter to remove the dead wood caused by winter injury in late spring.

Removing dead stems, deadheading and cutting for floral arrangements are not the causes of our pruning concern. Unfortunately, not all hydrangea types are created equal when it comes to pruning for shape and size. Each type has its own unique requirements, depending on whether the plant blooms on new wood (this season's growth), old wood (last season's growth) or both. Why does this matter? The type of wood your hydrangea blooms on impacts when you can safely prune and not accidentally cut off the flower buds.

Mountain & Bigleaf Hydrangeas

This group includes two species, *Hydrangea serrata* (Mountain) and *Hydrangea macrophylla* (Bigleaf), which produce mophead or lacecap-style flowers in shades of blue, purple and pink. The acidity of your soil can impact the flower color, and can be manipulated through soil amendments and fertilization practices—pink hues develop in alkaline soils and blues in acidic soil. These types of hydrangeas perplex gardeners the most, as the plants can bloom on both new and old wood, depending upon the variety. All the plants in this category, such as Nikko Blue and Blue Billow, bloom on old wood. Some of the modern or reblooming varieties—including the Endless Summer, Tuff Stuff and Let's Dance series—bloom on both new and old wood. As a general rule of thumb, if you do not know which variety you have, assume that your plant blooms exclusively on old wood.

Hydrangeas that bloom on old wood set the flower buds for next year in late summer. If you prune the stems back after the flower buds have begun to grow, and prune lower on the stem than the bud location, you end up



design by the jonathans

Design by the Jonathans, LLC

thejonathans.com

203.557.3205

Serving Connecticut and New York

interiors

kitchens

bathrooms



to grow, and prune lower on the stem than the bud location, you end up cutting off your flowers. When it comes to shaping or reducing the height of old wood blooming hydrangeas, you have several choices with greatly varying consequences:

Prune in early to mid-August, when the flowers are first starting to fade or change to a darker color; this allows enough time in the growing season for the plant to set buds for next year's flowers. Barring any major weather events or other cultural issues, your plant should have a nice, healthy flower display next summer.

Prune in early spring between late March and mid-April, using either renovation pruning or the rule of threes. In the case of renovation pruning, the entire plant is cut back to approximately one to one-and-a-half feet tall; this will most likely remove all the flower buds from the plant, and your hydrangea will not bloom until the following year. The rule of threes spreads the pruning over three years. This method allows you to potentially have two-thirds of the plant in flower each summer, while the other third is cut back to reduction pruning height. The later stems will only produce leaves and not flower until the next summer. To prune by the rule of threes, cut back a third of the stems to reduction pruning height, making sure



Architecture: Ralph Mackin Architects
Photography: Steve Freihon



HOBBS, INC.

**DISTINCTIVE HOMES
ADDITIONS & RENOVATIONS**

CONNECTICUT • NEW YORK
NEW JERSEY

203.966.0726
www.hobbsinc.com



end up looking lopsided.

Reblooming hydrangeas can be pruned either just after each set of flowers begins to fade, typically in mid-August or again in late September, as the second set of flowers fades. As they bloom on both old and new growth, if you are willing to sacrifice the first set of flowers, they could be pruned using the renovation method for old wood hydrangeas.

Smooth Hydrangeas

The big, bright white blooms of *Hydrangea arborescens* have earned it the nickname of the "Snowball Hydrangea." Native to the Eastern United States, this is one of the earliest types to flower, and blooms on new wood. Although smooth hydrangeas can be pruned in the fall, doing so between fall and mid-winter can leave the plants more susceptible to cold damage; wait too late in the spring, and you risk cutting off this year's flower buds. The best time of year is between mid-March and early April, which allows sufficient time for the buds to form after pruning. Annabelle is one of the most common large varieties. Its flowers can be quite heavy after a rain, and more mature stems can withstand the weight better, so it is important to consider this when pruning. Cutting back too far can result in long, thin regrowth that is much floppier. This is often the result when the plant is "cut back to the ground" or about six inches tall; conversely, if you leave the stems too tall, the new growth atop the stems can create an awkward tidal wave appearance, rigid at the base and tall and floppy on top. This is the one hydrangea species that we recommend annually pruning the stems back to one to one-and-half feet tall, depending on the variety. Although some of the modern smooth hydrangea series, such as Invincibelle and Incredi-

Treat your home like a work of Fine Art



Welcome to the Interstate Design Center of Greenwich, where the very best in windows, doors & hardware are on display. The view outside your window is like a painting, so give it the frame it deserves with windows and doors by Marvin. Your home is more than just a house, it's a work of art. So explore new designs and styles from Marvin, and turn your home into a masterpiece.

IDC Greenwich
184 S. Water St
Greenwich, CT
(203) 531-8050

IDC Westport
800 Post Rd E.
Westport, CT
(203) 221-1620

IDC Shrub Oak
1248 E Main St
Shrub Oak, NY
(914) 245-5050

MARVIN 

Available At

IDC
Interstate Design Center



ball, have been bred to produce thicker, sturdier stems, keep in mind that age matters. Don't expect a young plant to be able to perform as well until it has had some time to develop thicker stems.

Panicle Hydrangeas

Hydrangea paniculata is perhaps the most versatile, ranging in size from petite knee-high varieties, such as Firelight Tidbit, to the majestic Phantom, which is sizable enough to provide privacy screening. Blooms emerge in July, typically as white or lime green, transitioning to bright white and to shades of pink later in summer, as temperatures begin to cool. Although Panicle hydrangeas bloom on new wood, it is important to deadhead the flowers in the fall, especially on younger tree-form hydrangeas, to reduce the risk of snow damage and to prevent the flowers from breaking off in high winds and acting as large tumbleweeds. Pruning for shape and size should be done between mid-March and mid-April; if done later in the season, you risk removing the flower buds. For shrub form panicle hydrangeas, it is not recommended to make reduction pruning a regular practice; instead, try to remove not more than a third of the canopy size each year. Special care should be taken with varieties such as Limelight, which have been trained into tree form. The first few years when the primary stem is thin—less than the size of a silver dollar in diameter—it is important to cut the stems that radiate from the center trunk back to one-and-a-half to two feet in length from the main trunk. This keeps the structure of tree form more stable, reducing the risk of weight breaking branches or causing the trunk to lean. As the tree matures, the branches can be left longer.

Oakleaf Hydrangeas

Another native plant, *Hydrangea quercifolia*, requires a bit more patience than the other types of hydrangeas, as it can take several years after planting be-

fore the young plants produce flowers. Once it is mature enough to do so, it's important to note that it blooms on old wood. Snow Queen and Ruby Slippers are two popular varieties; the latter's color transitions from white to pink as it matures. These plants produce large flowers on sturdy stems. Aside from deadheading and removing dead wood, you should try to avoid any major pruning unless your intention is to do a renovation, keeping in mind that the plant will not flower for at least another year. Light pruning to shape should be done in summer, just as the flowers are fading.

Still uncertain as to which hydrangea you have? When in doubt, prune your plant only within the first month of when your flowers begin to fade away. If you are thinking about getting your first hydrangeas, but are not sure you are up to challenge of pruning them, choose wisely: select a variety with a mature size that is slightly less than you desire. Somehow, hydrangeas always seem to grow a bit larger than indicated on the tags at the garden center. Also, start with one of the more cold, hardy types, either panicle or smooth. Most importantly, remember that the flowers are there to be enjoyed—don't be afraid to cut yourself a bouquet or two during the season.

Resource:

Austin Ganim Landscape Design, LLC
Eva Chiamulera, ASLA, PLA
320 Kings Highway Cutoff
Fairfield, CT 06824
203.333.2003
austinganimlandscapedesign.com



Award winning Interior Design & Construction Project Management

21 Bridge Square
Westport CT 06880
203.331.5578
jan@janhiltzinteriorsllc.com
www.janhiltzinteriorsllc.com



NEW YORK | CONNECTICUT
FLORIDA | THE HAMPTONS

DOUGLAS GRANETO DESIGN

Greenwich

Manhattan

Miami

The Hamptons



www.douglasgraneto.com

203.622.8383

info@douglasgranetodesign

DG

DESIGN + DECOR





THE COSMOPOLITAN CONDO

A renovation elevates a condominium
to a new level in Bala Cynwyd.

Story by Meryl Siegman | Photography by Mike Van Tassell



The foyer was designed to make a dramatic statement with its porcelain floor and lush blue wallpaper.



If you closed your eyes and were transported to the interior of this fabulous home, you might guess upon opening them that you were in a chic, modern house in the suburbs or countryside. Gazing out the window, however, you'd notice you're above the tree line and looking out onto City Avenue in Bala Cynwyd, PA, an upscale suburb on Philadelphia's Main Line.

In fact, you are standing in a two-bedroom, two-and-a-half-bath, 2,700-square-foot condominium on a top floor of a full-service luxury postwar building on a busy street, with high-class shopping just around the corner. Let's take a tour of this beautifully conceived space.

The Designer

The creative force behind this residential masterpiece is Fatima Baba, the owner and principal designer of JanRad Design in central New Jersey. JanRad is a full-service interior design firm serving clients in the United States and abroad with a reputation for designing homes that are elegant, tasteful and uniquely tailored to their owners' preferences and needs. The firm is known for its comprehensive turnkey design service that includes design, 3D renderings, sourcing and procurement, styling and project management from initial concept to final installation.

Fatima grew up in Saudi Arabia and Dubai, which made an indelible mark on her interior design aesthetic. She loves traveling, particularly when her work takes her overseas. "I meet new people and explore new cultures, which I am able to incorporate into the project I am working on, bringing in the elements of that society," she says. She is excited by all that is new, different and foreign, which inspires her and takes her out of her comfort zone. Referring to a residential project she recently completed in Saudi Arabia, she details its Eastern elements and her selection of a luxurious palette with rich tones to create an opulent and glamorous look.

She brought that sensibility to this project in Bala Cynwyd.

The Turnkey Project

Fatima describes this as a dream project particularly because its owners gave her remarkable freedom in her work, allowing her creative juices to flow. The clients stayed involved in the renovation and provided feedback after reviewing 3D renderings of the space. Their main goal, however, was to take possession of the apartment after all the work had been done—down to the silverware in the kitchen and the towels in the bathrooms—and it was ready to be inhabited. The project provided Fatima with the opportunity to showcase JanRad's full-service capabilities, from devising a floor plan to adding the finishing touches prior to move-in.





Restoration Hardware and Bernhardt supplied most of the furniture throughout the home.

Many of the accessories were supplied by Arteriors and Ralph Lauren.



The Scope of Work

"This project was a complete renovation," Fatima says. "We totally gutted the master bathroom, changed up the kitchen and selected every detail in the home, including wallpaper, floor tiles, fabrics, furnishings and lighting." The most dramatic change was creating an open floor plan. "The kitchen opens to dining room, which opens to the living room," Fatima explains. "There are no walls dividing any of the area. We zoned it with furniture." Beautiful views of the Philadelphia skyline can be seen from the living and dining rooms.

The previous owner of the condo had undertaken a complete renovation prior to selling it. "It had high-end finishes, hardwood floors throughout and lots of home auto-



Navy blue chairs in the dining room pick up on the use of blue throughout the home.



mation,” Fatima recalls, “but it wasn’t my clients’ style.” The designer left certain things as they were, including the kitchen cabinets and wood flooring in many of the rooms. “But mostly we changed everything,” she continues, “adding more features, such as porcelain floor tiles in the entryway, and wallpaper in almost all the rooms.”

The Aesthetic

The owners had hired JanRad for a previous project, and as a result had complete faith in her work. “My clients said, ‘We love what you did; do that here,’” Fatima recalls. “While both residences are luxurious, there’s a difference between them. The condo’s design is not rustic, traditional or contemporary. I would describe it as ‘luxury modern,’ a spin on classic luxury design, but with modern pieces and furnishings.”

Fatima carried this theme throughout the residence, choosing luxury finishes such as European fabrics and then layering them. She added a modern twist to a traditional chair with curved legs by reupholstering it in a neutral color and topping it off with a modern pillow. “We decided to keep the kitchen cabinetry,” she explains. “It was beautiful and high end, and had just been installed. We built the design scheme around its pale blue/gray color.”

When you enter the apartment, you can see the kitchen right

from the foyer, and from there the living and dining room spaces. “I started with deep blues in the foyer, building up from the kitchen cabinet,” Fatima says. “From the kitchen, you can see the navy-blue dining room chairs and rich blue accents throughout the living area.”

The Walkthrough

“The clients wanted guests to experience a special feeling as soon as they enter the apartment,” Fatima says. “When you come into the foyer, you immediately know you are entering a completely different type of space.” She replaced the hardwood floor with porcelain tile to make a dramatic statement, and changed the color scheme from neutral colors to a rich, dark blue to provide a sharp contrast and add a sense of uniqueness to the space. In the kitchen, she chose quartz for the countertops and backsplash, and created a waterfall on both sides of the island.

In the master bathroom, the only area that was completely gutted, Fatima replaced the two separate vanities with a single one on one wall, using the other wall for a stylish, freestanding tub. She used a mixture of finishes for the tiles and countertops that included quartz, porcelain and calacatta marble.

Of all the rooms Fatima designs, she loves doing living rooms the most, because they provide a lot of room to be creative. “In



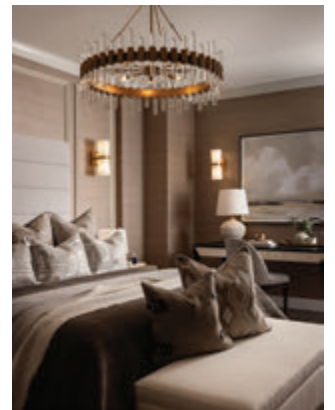
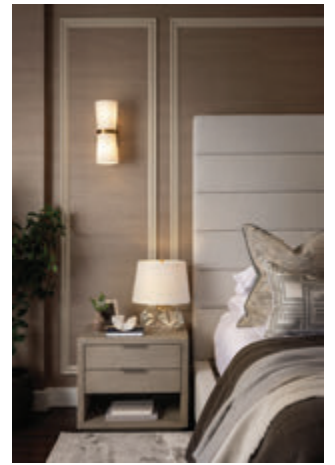
The interior designer made selections from furniture and fabrics to blue, gray and off-white for the kitchenware to match the home's design scheme.







The wall sconces and pendant light are from Kelly Wearstler and Hammerton Lighting.



this house,” she says, “I love the kitchen, dining and living spaces because it is one giant, open area. We created layers and used a consistent theme of natural earth tones mixed with different shades of blue. The clients and I were thrilled with how it turned out.”

She continues, “I shopped everything—and I mean everything—for the interior. It was all brand new.” After ordering kitchenware, toiletries, candles and diffusers, she oversaw the styling right up until the photoshoot. “It was a genuine turnkey project from start to finish,” she concludes.

The Results

Fatima likes to present 3D renderings to her clients so they have an idea of what their space will look like once completed. All the



In the master bathroom, a double vanity was installed on one wall and a freestanding tub along the other.

Calacatta marble was chosen for the tub floor and framing around door of the master bathroom.



approved items—including pillows, throws, rugs and window treatments—appear in a design schedule and on the renders. “It’s a beautiful thing when it comes to life,” Fatima exclaims. “You can see the textures and colors in real life—it’s mind-blowing. My clients are always amazed.”

The transformation of this condominium represents not just a renovation, but a reimagining of urban living at its finest. Fatima Baba’s keen eye for detail has elevated this apartment to a realm of unparalleled sophistication and comfort. When its residents and their guests step into this cosmopolitan haven, they are greeted not only by its stunning aesthetics, but also by the essence of a home tailored to inspire and delight at every turn. As Fatima says, “It’s not just a home—it’s an experience.”

Resources:

Interior Design:
JanRad Designs
Fatima Baba, Owner and Principal
 732-533-3774
janraddesigns.com

KITCHENS 2024



THE DESIGNATED KITCHEN

Kitchen design evolves, trends come and go, and technology advances in products like appliances. Each year we like to tap our kitchen designers, interior designers and architects to see what is ahead in design and products for the next year.

Stories by Shehla Lucanera

LAUREN VALLARIO DESIGNS LAUREN VALLARIO



Lauren Vallario Designs is headed by a technical master of all aspects of luxury kitchens and baths. A graduate of the Art Institute of Pittsburgh, Lauren Vallario saw a need for a clever designer who would understand the complex inner workings of kitchens and bathrooms, not just the exterior aesthetics. Her degree in psychology from Manhattan College truly helps her put her clients at rest—she knows how exciting and sometimes stressful a renovation can be, and she is there to support her clients throughout the process.

The acclaimed designer shows us a spectacular kitchen that she thoughtfully designed around large windows that filter in an abundance of light. The talking

point of the space is its Calacatta Paonazza marble, whose uncommon visual movement and beauty will be admired for many years to come.

Lauren shares her thoughts on the designated kitchen, where every inch of space is purposeful. “For me, it means making sure there is a zone for how my client works,” she says. “In this particular case, we needed a baking zone, a coffee station, a cleanup area and a prep baking sink. We had these areas in mind when we designed this kitchen.”

She continues, “We designated a lot of the island to the baking area, including all the things the homeowners will use. If you look at this kitchen, there really aren’t any wall cabinets. The kitchen is





mostly windows; there is one wall of appliances with the ovens, freezer and fridge, and there is a pantry. Another pantry is a few steps away. We made sure the mixing bowls and everything needed would be right there.”

Museum-worthy in style and yet completely functional, this kitchen is a departure from tradition in a number of ways. Lauren divulges some creative strategies she implemented to make the space unique. “This kitchen has a separate fridge for the kids to grab what they need, so they aren’t staring into a fridge, moving things around,” she says. “The cabinets flanking the hood were removed—the heaviness on each side of the cabinets was too much. We loved the idea of adding more texture with the sconces, along with the plaster finish on the hood above. It made the kitchen more open, airier and less kitchen-like!”

Without wall cabinets, how did Lauren guarantee ample space for her clients? “The inches are really critical in this kitchen because we don’t have wall cabinets,” she says. “The client loved the look of a traditional inset cabinet, but we didn’t want to lose any space. We went with a full overlay and added fillers to the ends of the cabinets to give it the look she wanted with the inset cabinetry, but didn’t lose those extra inches we would have by going with the inset.”

The color choices, statement backsplash and island bring this kitchen together to create a timelessly elegant look. “The island and the backsplash behind the stove are Calacatta Paonazza marble,” says Lauren. “It’s got a lot of character and veining. The homeowners wanted something really beautiful and statement-driven. We searched high and low for the perfect slabs of stone that incorporated all the colors they wanted to bring in. It has such beautiful movement, picking up the blue-gray that’s in the cabinets, plus the orange rust color pulled in from the sconces and the little details on the picture frames.”

The entire kitchen is a work of fine art, and Lauren’s clients couldn’t be more thrilled with the results.

Resource:

Lauren Vallario Designs

Lauren Vallario, Owner and Principal Interior Designer

652 Glenbrook Road, Building 4, Suite 3-312

Stamford, CT 06906

917.674.3539

laurenvallariodesigns.com



THE RATH PROJECT
DIANE RATH





Diane Rath always had a talent for envisioning spaces and transforming layouts. As a little girl, she would diligently peruse garage sales and surprise her family with spontaneous furniture arrangements and new, innovative art adorning the walls. Her career path began as an educator, which provided invaluable skills she would need to successfully serve her many design clients. Diane knows that changing the look of a one's home is a deeply personal decision, and understands the importance of genuinely listening to each client's needs. She carefully considers opposing opinions and masterfully finds spectacular options to make all family members fall in love with their home. With degrees in English and business, Diane brings all her experiences to her acclaimed firm, The Rath Project.

Each of Diane's intricately designed spaces feels like a unique work of art, reflecting the personalities of those who reside in the home. Diane shares with us a kitchen she recently designed for a family, which expertly balances playful visual aesthetics with optimal functionality. "The kitchen is the hub of the home," she says. "It needs to be completely functional for the family that lives in it, but it's also important to focus on how the kitchen makes you feel. How it looks really indicates how you are going to feel in the space. Your kitchen should look and feel as comfortable as the rest of your interiors; it should flow from one space to the next. This is why we use items like rugs

and lamps in kitchens. We tell beautiful stories with the use of artisanal tiles and color throughout our kitchen spaces. Your selection of countertops can make your kitchen feel warm and friendly, less sterile and harsh. We wanted the kitchen to feel as welcoming as the living room."

This kitchen radiates color and joy with its unexpected color combinations. How does Diane discover what her clients like in order to create an elegant space that is reflective of their needs? "We meet with the clients, do a complete walk-through, and listen to their requests and needs," she explains. "This particular client wanted a complete remodel. The kitchen started off as a white box—it was a bit boring—and these wonderful clients were anything but boring. They wanted the kitchen to feel like a fun, vibrant space that also spoke to the rest of the house, as well as to the family. It's a real mid-century home, so much of what we did reflects that era. We incorporated beautiful mustard tile with artisanal pieces artfully scattered throughout. The placement of the appliances is not necessarily your typical appliance placement because we had to accommodate the homeowner, who is a baking enthusiast. She needed to be able to function and move around comfortably from her oven to the baking storage area."

Both comfortable and functional, this exciting kitchen defied some laws of kitchen design, resulting in real character and





personality. “I feel like we broke all the rules!” Diane exclaims. “We seamlessly carved out a space in the back of the fireplace to create a walk-in pantry. I think most people would have overlooked that. Another way we thought outside the box was with our use of unique accent tiles—we found a talented ceramic artist. When the homeowners saw this accent tile, they loved it, and it’s purposely placed a bit haphazardly for effect. We also used two-toned cabinetry and two-toned countertops.”

Undeniably fun and whimsical, this kitchen doesn’t adhere to the traditional kitchen triangle layout. Diane used the client’s unique needs and specific requests, coupled with her innate talent, to take a creative approach. “This kitchen is tailored for the client,” she says. “We have two refrigeration units in here: a big refrigerator built into the tall pantry, and a smaller refrigerator and two drawers on the peninsula for the kids to grab snacks and go. We needed to make sure this was going to function optimally for the baking needs. We broke up the kitchen into zones to allow people to be in there at the same time, functioning and doing different things without getting in each other’s way.”

Indeed, the entire family can easily spend time together in the kitchen, thanks to the thoughtfully designed spaces. Diane explains how she made the most of the space, ensuring there was a nook for anything that could be hidden away when not in use. “For this kitchen, the refrigerator is hidden—we wanted the cabinetry to stand out,” she says. “We tucked the microwave into the cabinetry in the peninsula. I think that trend is becoming more popular these days. In the island, we have pull drawers that hold big pots and pans and large dishes.”



Optimally operational and visually lively, the kitchen features dramatic color combinations and mixed materials that draw us in and invite us to linger in the space. Diane divulges how she approached this exciting design challenge. “We love mixing brass and wood—walnut in particular,” she says. “We have a lot of wood accents in this kitchen that vibe with the rest of the mid-century home. We incorporated mixed materials in the island, pendants and open shelving; even some of the handles are a wood and brass mix. On some of the larger appliance handles we went with a solid brass, so we’re really mixing up a lot of different materials here. For the perimeter of the kitchen, the countertop is a marble that is going to wear over time and develop character over the years. That was okay with these clients; they liked the idea of the kitchen aging with them and getting prettier over time.”

Bringing bold authenticity filled with real character to each room is Diane’s natural gift, and her ecstatic clients are certainly passing on the word, making Diane Rath a top name in East Coast design. The Rath Project proudly serves Connecticut, but she and her team are willing to travel for select clients and exciting projects.

Resource:

The Rath Project
 Diane Rath, Principal Designer and Owner
 518.542.6268
therathproject.com

DESIGN BY THE JONATHANS
MICHELLE MORAN





Michelle Moran is one of the newest talents to join the acclaimed team at Design by the Jonathans, and she's already created some spectacular, magazine-worthy spaces for the firm's clients. Michelle brings more than 20 years of artistic and technical experience working in architecture and client-centered interior design. She learned to appreciate quality design from a young age, as her parents were well-known antique dealers who brought her to countless antique shows, shops and auctions while she was growing up. Michelle received her bachelor's degree in interior design from Boston Architectural College, and has broad experience working for architectural and interior design firms on both commercial and residential projects.

Design by the Jonathans is indeed lucky to welcome Michelle on board, as she brings an aesthetic understanding that is recognized and respected by the firm's luxury clients. Michelle acknowledges that changing the design of one's home is intensely

personal, and she honors that privilege by exceeding her client's expectations while keeping their budget in mind.

We asked Michelle her thoughts on designing kitchens, a central part of every home. "Kitchens truly are the heart of the home," she says. "Even if clients don't spend a lot of time cooking, people still gravitate towards the kitchen. It has become an extended living space—not just a place for cooking and chores."

Michelle shares with us a vintage-inspired kitchen that she created for a Connecticut family who enjoy cooking and gathering with family and friends. This stunning space manages to feel spacious yet cozy at the same time. With thoughtful design details, such as the custom window treatments and coordinating area rug, this kitchen was truly created with the client in mind. Designed for both entertaining and function, the kitchen features strategic hideaways, such a coffee bar complete with a quartz countertop and retractable doors that easily hide it away





when not in use. And with its natural white oak cabinetry and lightly veined quartz countertops, this kitchen invites guests to pull out a stool from the island and enjoy the company.

This kitchen draws us in with its warmth and charm. Key to making this kitchen design come to life was using a combination of mixed materials and a melding of old and new styles. Some of the personalized features include the vintage-inspired appliances and the custom range hood done in a natural white oak to match the cabinetry. The range is a true showpiece, and is further accented by the brass hardware and fixtures and mixed metal accent lights. Unique subway tile in a herringbone pattern is a deviation from the expected, and adds some shine and interest to the space. Another standout feature is the large custom island, which is not only functional but also adds a touch of whimsy, with its pop of color and its fun but sophisticated marble tile on one side. The mix of old and new styles ties the space together beautifully.

What's Michelle's secret to creating a space that is truly tailored to her client? "Custom cabinets can make all the difference in comparison to semi-custom cabinets and non-custom cabinets," she says. "Plus, the cost difference is not as drastic as one might think." In this kitchen, the natural wood custom cabinets complement the finished white oak floors, with the white oak carry-

ing throughout the rest of the first floor of the home.

Designers have been known to take risks to create personalized kitchens for their clients and "break the rules" in terms of traditional design. Michelle believes some formulas are time-tested for a good reason. "Sometimes the rules are there because they work well and have for many years," she says. "It would be like trying to reinvent the wheel." She takes pride in always placing her client's needs and aesthetic choices first. "I work very hard to take my clients' tastes into account while still guiding them in a good direction," she says. "I'm not designing for me; I'm designing for them. In the end, what I'm trying to achieve is an amazing space that truly speaks to the individual client. People's homes are personal, and I try to design with that in mind."

Resource:

*Design by the Jonathans, LLC
Michelle Moran, Kitchen and Bath Designer
85 Willow Street
New Haven, CT 06511
203.349.2549
thejonathans.com*



LARA MICHELLE BEAUTIFUL INTERIORS LARA MICHELLE

Photography by Chuan Ding



Award-winning designer Lara Michelle is a graduate of Cornell University's School of Fine Arts, NYU's Tisch School of the Arts, and The New York School of Interior Design. After earning her bachelor's degree in fine arts, she polished her design skills by working alongside the country's most renowned designers in New York City, and then opened her own successful design firm, Lara Michelle Beautiful Interiors, in 1995. Lara enjoys tailoring a home specially for each client, placing great importance on the heart of the home—the kitchen.

Here, Lara shares an elegant, luxurious kitchen she recently designed in Westchester, NY, for clients who love to entertain. An absolute dream for hosting family and friends, the space is adorned with statement pieces to anchor the light and bright kitchen.

In taking on a new design project, Lara draws from her vast experience in creating luxury kitchens and transforming homes. What comes to





mind when she thinks of a designated kitchen? “Any room I design is pretty designated,” she says. “Everything always has a place; everything is super-international. I’m always looking to improve whatever the homeowners want to maximize. Entering and exiting the room is important to consider, especially where people will be gathering. You don’t want people to congregate around the person cooking or behind the refrigerator. This particular client wanted a lot of storage and a large island for entertaining.”

This kitchen was specially tailored to this family and their entertaining needs. Lara explains how she works with clients to guarantee that the space fits all their requirements. “When I sit down with a client, I review every single thing they want in their kitchen,” she says. “We go over what they want in the drawers along with custom dividers. Sometimes there is more than one dishwasher; we go over all the details. This client entertains their family in this home over the holidays, but has other homes in Florida and Vermont.”

What did it mean to “break all the rules” in terms of this kitchen? “These homeowners wanted a bar in the kitchen, a counter for serving, and storage for drink bottles,” says Lara. “Inside the cabinets are pull-out drawers custom created by my carpenter. We did the countertop in a two-inch thickness instead of the standard inch-and-a-quarter, so you can see the beautiful pattern around the edges. It’s more expensive and labor intensive, but it really makes a difference. Sometimes homeowners just feel constrained by windows and drawers. I love a window over the sink, so you can enjoy a view while doing the dishes.”

How did Lara succeed in making the most of this space? “It all starts with the client interview and what they have to store,” she explains. “How much fine china and glasses do they have, for example, and where do they like to have them? Do they bake? Where do they like to ‘live’ in the kitchen?” Nestled neatly away in the island of this kitchen is a warming drawer and a cooling drawer, perfect for holiday gatherings and parties.

Lara incorporated luxurious mixed materials and fixtures for the ultimate dramatic touch. “The customized countertop and the same stone for the backsplash continue up the wall,” she notes. “The light fixture is a unique and super-cool custom fixture made by an artisan in Vermont. It’s iron with hand-blown goblets lit from above, perfect for this client, who wanted statement lighting for the center of the kitchen. The floor is a special custom stain, natural but without any yellow, and still has a little warmth to it. The stools have a fantastic faux leather. Faux leather is super easy to clean, and it’s impossible to tell the difference between real and faux.”

Lara’s magic combination of highly select materials blended together expertly with restraint and sensitivity created this sleek and sophisticated kitchen that the homeowners will enjoy for years to come.

Resource:

Lara Michelle Beautiful Interiors

Lara Michelle

914-939-5777

laramichelle.com

PRUDENCE HOME AND DESIGN
PRUDENCE BAILEY





The notion that it takes a design genius to recognize a truly brilliant designer may describe how Prudence Bailey's talent for creating spaces was discovered. When a leading interior designer was helping Prudence beautify her home, he quickly recognized her innate gift and uncommonly perceptive vision so essential to successful interior design. He asked Prudence to join his team—and bring her unique skill for intermingling traditional and modern styles. Though Prudence kindly declined the offer, she was prompted to carve her own path, exploring her dreams of interior design and launching the acclaimed firm, Prudence Home and Design.

"It was important for the clients to celebrate the historic nature of the home," Prudence explains of this residence she designed in Hamilton, NY. Elegant, artistic and budget-conscious, the finished project is proof of Prudence's remarkable ability to transform a space while working mostly remotely, as this house was five hours away from Prudence's office. She drew painstakingly precise plans, with every inch thoughtfully contemplated and considered. As it was the client's second home and occasional rental property, the materials she used had to be both luxuriously pleasing to the eye and highly durable for continuous use.

Prudence ensured that every space in this artistic kitchen was designated for a function. "That was really important," she says. "This is a family with four kids, and the homeowners wanted a kitchen where they could all spend time together and not feel crowded. I wanted to create some comfortable separation when they're all milling about, cooking and doing the dishes. There is a good amount of space at the large island, even with the stools. This is the heart of the home, where they spend the most time.



It had to be super-comfy and chic, but also very functional for a large family.”

The original kitchen was too small to comfortably fit a large family, and more space was required. Prudence dared to knock down walls to create space, resulting in an expansive and timeless look. “It never could have happened if we didn’t take out the wall and push farther out,” she says.

Artistic and elegant, this kitchen is anything but ordinary. What was it like for Prudence to step away from a traditional kitchen to create something fresh and inspiring—yet completely reflective of her client? “It’s not traditional, yet rather has an art gallery feel to it,” she explains. “It also has a vintage yet modern feel. I balanced the light and dark—versus all light or all dark—and I just love how it turned out. We didn’t fill the stove area with cabinetry; we added panels to the back wall and hung beautiful art. Leading with art is not the standard for kitchen design. The swooped decorative backsplash design was not something the stone fabricator had ever worked on before. The image on the wall of the girl smoking a cigarette is the client’s daughter recreating the famous photo of Brigitte Bardot.”

Indeed, in addition to being a work of fine art, this kitchen is optimally functional with intelligent hideaways for the appliances. “The refrigerator and freezer are hidden behind the cabinets; we also created a pantry cabinet,” says Prudence. “Plus, we’ve hidden other appliances that homeowners don’t want out; I always do that in a kitchen because it’s so useful.” Concealed behind the smooth cabinets is a full coffee station that seamlessly closes when not in use.





The look and feel of this kitchen certainly make it a conversation starter, with its attractive mix of luxury materials and finishes. Yet, since this is a second home, and often rented, the clients “didn’t want anything overly precious,” says Prudence. “The large island and decorative backsplash are quartz,” though “the island looks like luxury calacatta stone.” She adds, “The clients didn’t want to spend too much on lighting; the lights are big enough to serve the island, yet modern with a vintage feel. We also broke through a wall and used a lot of the brick for behind the sink. In the process, we discovered some historic secrets about the home, such as a forgotten door for cooks and servants.”

The finished kitchen is a perfect example of Prudence’s remarkable talent for blending modern and traditional styles to create a beautiful, functional space that is unique to her client.

Resource:

*Prudence Home and Design
Prudence Bailey, Founder and Principal Designer
76 Elm Street, Suite 204
New Canaan, CT 06840
203.859.9499
prudencehomes.com*

THREAD AND TIMBER
MARCIA FLETCHER

CROWN POINT
CABINTRY



Designer Marcia Fletcher is one of those talented individuals whose creative genius emerged at a young age. She knew from her freshman year of high school that she wanted to be an interior designer, and through an immersive program began shadowing a professional in the field. She acquired 16 years of extensive experience working in interior design, and was also employed by a construction company for a few years, where, she says, “I gained a great understanding about the flow of a project and what contractors need.” With a sincere passion for designing beautiful spaces and changing the lives of homeowners, Marcia launched her own successful company, Thread and Timber, which creates truly personalized designs in the New Hampshire area.

Marcia’s years of experience have provided her with an impressive portfolio of luxury kitchens, expertly designed for each unique client. What does a designated kitchen mean to her? “It means there are areas where the cook gets to be, and guests don’t need to cross into that area to be with each other. For example, they can get a drink from the refrigerator and avoid the cooking range, or wash their hands without being in the cook’s space.”

Kitchens can be as individual as the families they serve. How does Marcia ensure that the kitchen she designs is absolutely perfect for her clients? “We have a conversation inquiring what their dream kitchen features,” she explains. “This helps me listen to their thoughts and what they have seen, determine what’s not working, and provide a solution to fix it. For one project, we’re swapping spaces with the kitchen and the formal living room. A wall is coming down, a structural member is being installed, the kitchen is getting a bigger space, and the rooms are open to each other.”

When asked about breaking the rules to transform rooms for her client, Marcia says, “I consider the options to layout and achieve a design, then educate the client on the pros and cons of the designs being presented. At this point, all ideas are on the table.”

The kitchen that Marcia shares here with Design + Decor was thoughtfully segmented. She experi-









mented with the area, walking through many times to determine the optimal flow for the most graceful use of space. “The size of this kitchen created a working triangle naturally. For larger kitchens, we create zones, such a beverage area, a tall pantry cabinetry for food storage, an area for dishes and a cooking area. It also includes multiple sinks to save on footsteps.”

In addition to ensuring intelligent flow and movement within the space, Marcia also enhanced the kitchen by providing a solution for numerous kitchen appliances. “When we first met, the client had so many items on the countertops. Working with Crown Point Cabinetry, a fully custom cabinet company, we created a baking cabinet in the backsplash, where the mixer is stored. The door is on a hinge that allows it to open, and the mixer can be used right there.”

A popular nook designers can incorporate is a coffee hideaway, which Marcia created to help tidy and revamp the space for this coffee-loving client. “To get the coffee maker out of sight, we utilized pocket doors that slide into the cabinet. They remain in the cabinet for the morning, and then conceal the maker during the day. We also used drawer divider inserts to keep silverware and utensil drawers organized.” With no inch left unused, the island is both attractive and highly functional. The seating side of the island features narrow-depth door cabinets, where the less-used items are neatly tucked away.

A well-designed kitchen echoes the people who will enjoy the space. Marcia’s clients enjoyed travelling, providing an inspiration and opportunity for her to bring in global charm and personality reflective of the family. “With this kitchen, we wanted to honor the client’s collections from travelling. The contractor, Cedar Mill Group’s owner, fabricated the custom Shoji screen to create a visual separation from the entry and stairs of the home.”

“The Zellige tile provides the handmade appeal and multiple shades of white we were pulling from the granite countertops,” Marcia continues. “The mix of white and stained cherry wood cabinetry creates play while keeping it bright. The paneled refrigerator balances the tall pantry cabinetry. We also used wood cabinet bookcases to flank the wood stove and join that sitting space with the kitchen. Black naturally tied everything together for the hardware, plumbing fixtures and cabinet hardware. It’s all about creating a balance in the materials being used.”

Thinking creatively and making big, brave, sweeping changes are necessities of the job—and Marcia is always ready for the challenge.

Resources:

Interior Designer:
Thread and Timber
Marcia Fletcher, Owner
 39 Eastman Street
 Concord, NH 03301
 603.520.7400
threadandtimber.co

Cabinetry:
Crown Point Cabinetry
 462 River Road
 Claremont, NH 03743
 800.999.4994
crown-point.com

KATE GELFAND INTERIOR DESIGN
KATE GELFAND





Designer Kate Gelfand creates aesthetically stunning interiors with the confidence of an industry leader. Reinforced by her solid technical background, Kate knows that a gorgeous final result is built upon flawless construction, so she personally crafts all construction drawings for clients from start to finish. She holds a master's degree in interior architecture from George Washington University, which helped launch her successful career in design, anchored by a detailed understanding of how a home is built. "That's the root of what I do," she says. "I love construction renovation."

For more than six years, Kate worked for a highly acclaimed designer in Southern California, beautifying homes for celebrities and athletes. Once in Connecticut, her design vision and computer-aided design drawing talents brought her name to the forefront of East Coast design. Clients especially appreciate how Kate expertly incorporates natural materials into her work. "I love natural materials and a lot of glass," she says. "It's very clean and very calm—the laid-back Califor-



nia vibe is present.” Today, Kate Gelfand Interior Design is known for its work with luxury residential clientele. In addition to doing ground-up construction and full design renovation, Kate also designs bespoke furniture for select clients and always welcomes new design projects.

Here, Kate offers a stunning example of how she transformed a kitchen space to be truly functional as well as comfortable and luxurious. “The kitchen has become a secondary living space,” she says. “It’s the heart of the home in a way that, historically, it never was before. Kitchens were behind closed doors with secluded staff. Now—and especially in this floor plan—the secondary entrance the family uses primarily walks you right into the kitchen. To me, that naturally means there is something for everyone in this space. It’s an open area where you can sit down, enjoy a cup of coffee, do a little work, feed your children, socialize or have a glass of wine.”

The kitchen must meet the homeowners’ functional needs and also be aesthetically pleasing. Kate explains how she and her team get to the heart of what her clients ultimately need and want. “You have to determine how clients utilize their kitchen,” she says. “Some use the kitchen as a social or entertainment setting, and others want to focus on cooking. For those who enjoy cooking, we first think about appliances. Second, we look for natural stone options, which is such a dominant selection for the overall aesthetic of the kitchen—it tends to get people really excited about the evolving design.” In this kitchen, the Arabescato marble stone used on the island and the dramatic backsplash are both visually exciting and an artistic focal point.

This spacious kitchen does not adhere to traditional guidelines, and that is all for the better. “We broke a lot of design rules in this kitchen,” Kate

explains. “We mixed a lot of materials. We have stain grade and paint grade material, and we have two types of stone. The hood is wrapped in a darkened bronze. We use polished nickel at the sink, and black hardware on the cabinetry. A basic rule is that you have one color on your cabinetry, and the metal should match throughout. We did the exact opposite. I think that’s a good way to break the rules—to be okay with pairing beautiful things together.”

Moreover, the “kitchen triangle” did not dictate how Kate created this stunning mix of wood, stone, fabric and light. “We did not do a kitchen triangle layout,” says Kate. “We have a range wall, a refrigerator wall and the sink on the opposing wall. The space is so wide and open that conforming ourselves with that three-point geometry wouldn’t have made sense. An entire wall is dedicated to the cooking space with a ton of countertop storage around it. While things aren’t in an ordinary triangle, we’ve swapped that for a very generous amount of cooking and counter space.”

Both gorgeous and functional, the kitchen has everything the client might need efficiently stored away in a designated place. “A butler’s pantry has become a very big add-on for homes that have the space,” says Kate. “The less attractive items go in there, such as the coffee maker. I often design a large pantry-sized cabinet with retractable doors; inside is a stone countertop for housing appliances. It’s one fluid space, and there’s a place for everything. We also utilize storage on all sides of the large kitchen island; if you pull away the stools, there is storage.”

One of the many charms of this kitchen is the blend of eye-pleasing materials used. “Appliance designs are getting sleeker and more beautiful,” says



Kate. “A stove by L’Atelier Paris is a jewel in your home, and even the more rudimentary ranges are being designed to be less industrial-looking. This kitchen features three metals: bronze, graphite and polished nickel—which would blow a lot of people’s minds. Many clients are focused on matching and having the metal be a consistent in the room. You can see that white oak cabinets line the perimeter. We have two different, beautiful countertop stones: We have a natural marble from Italy, Arabescato, on the kitchen island and backsplash. In areas with traffic that are prone to staining, on either side of the range and sink, we have Black Absolute, which is a very hardy, soapstone-quality stone.”

Though Kate Gelfand Interior Design is based in Connecticut, the firm also works in other states with select clients who may have vacation homes that could benefit from her fresh, clean, timeless designs.

Resource:

*Kate Gelfand Interior Design
Kate Gelfand, Owner and Principal Designer
50 Greenwich Avenue, Second Floor
Greenwich, CT 06830
203.485.0413
kategelfand.com*

DOUGLAS GRANETO DESIGN
DOUGLAS GRANETO





Douglas Graneto has thoughtfully designed numerous spaces for his fine commercial and up-scale residential clients across the Northeast and the globe. Douglas perfected his craft while working with design icon Tony Ingrao, and with Tony's encouragement opened his full-service design firm, Douglas Graneto Design, in historic Greenwich, CT. Douglas' background in art history and profound understanding of fine design ensure he deliver a unique and curated project for each client. He truly transforms spaces into bespoke visions of functional art.

Here, Douglas presents a dignified and timelessly elegant secondary kitchen he recently completed for a dedicated home chef. Douglas is the ideal designer for clients who take the joy of cooking seriously. It's no coincidence that numerous professional chefs and devoted home chefs have entrusted Douglas Graneto Design to create the kitchens of their dreams. Douglas—who appreciates cooking himself—understands culinary language and has won awards for the ingenious, sophisticated spaces he has designed for professional chefs.

Douglas tells us about creating this client's secondary kitchen and lavish pantry within the basement. "They have dubbed it the 'Country Store,'"





he says. “These clients have a passion for food and the science of food. Cooking is important to them—as well as a beautiful pantry. They had a very strong sense of what worked for their space layout, and appreciate having a very well-stocked kitchen with vintage copper pieces.”

He explains how this basement space was designed and transformed into a luxurious kitchen. “Everything was completely thought out, with ample space for the bowls needed for olive oils, condiments—basically everything the chef needed for the kitchen,” he says. “The client knew exactly how he wanted the secondary kitchen in terms of proximity to cooking and storage. The project grew organically with the decision on color and architecture. Also important was the mobile cart in the middle, which can be used for serving.”

“The primary kitchen is upstairs,” Douglas continues. “This client appreciates stone with a heavy vein, so we maximized the look of that. The cabinets are custom made, with the clean lines. The family also likes colors, so we used colors throughout the house.

The cabinets in this kitchen are perfectly sized for their intended contents, drawing the eye to admire the vitrine-like glass display

housing the elegant bowls and serving dishes. “It’s all very organized where everything goes,” says Douglas. The antique copper cookware adds lustrous shine and warmth to this remarkable space. A kitchen this inspiring promises gourmet surprises for the lucky guests—it is both gorgeous and welcomingly comfortable.

The small boutique firm is gaining global notice, thanks to Douglas’ artistic vision and characteristic design execution. The company also designs and creates custom furniture for select clientele. No wonder Douglas Graneto Design remains busy year-round remodeling and reimagining spaces. Douglas’ designs are both functional and visually exciting, employing practicality and creativity and that are tailored to each client.

Resource:

Douglas Graneto Design
Douglas Graneto, Principal
 61 Ridgeway Avenue
 Greenwich, CT 06830
 203.622.8383
douglasgraneto.com

DEBBIE JACKSON INTERIORS
DEBBIE JACKSON





Debbie Jackson Interiors specializes in a refreshingly clean aesthetic, echoing a Northern California influence with the warmth of Modern Farmhouse style, accompanied by a sprinkle of Boho. Debbie creates her design magic with a wistful mix of luxurious fabrics, sumptuous pillows and elegant accessories to create a timeless look. After more than 15 years of experience designing clothing for the Gap, Debbie took a break from fashion to focus on beautifying her West Coast condo. Her innate sense of artistic detail and design helped make a seamless and rewarding career transition to interior design—and she has been beautifying spaces and changing lives ever since.

Debbie has a personal connection with this welcoming kitchen that she shares with *Design + Decor*. “This kitchen is my previous home,” she says. “It was new and a very traditional white kitchen when we purchased it; I had to put my spin on it.” Indeed, this fresh, clean kitchen radiates comfort and elegance, while the dining area brings intriguing visual drama with statement light fixtures and the mix of black and natural





materials. The space strikes a balance with its clean whites, natural materials and sparkle of bronze for impressive effect. What's Debbie's secret to creating this clean look?" I always try to mix metals and add texture and warmth with wood elements throughout," she explains.

We asked Debbie about her process of meeting clients for the initial interview to discuss how to perfectly designate a kitchen for them. "This is the opportunity to create a functional and aesthetically pleasing space that reflects the needs and preferences of the homeowners," she says. "The first step is consulting with the clients to understand their lifestyle, habits and specific requirements for the kitchen space." Debbie makes it a truly collaborative effort by listening intently to the clients' wants and wishes for a dream kitchen and offering thoughtful suggestions and options.

At times, Debbie's upscale clients want to showcase their favorite kitchen items. "For those clients, I have designed kitchens with open shelving and display areas," she says. "This adds easy access to their favorite items and a decorative element." And how does she introduce new, imaginative ideas to clients who might not think they're ready for fun and daring designs? "Of course, I consider all the needs of my clients in the design process," she says, "but it is my job to push the envelope and add some unique and unexpected design elements."

Planning a kitchen can be stressful, but Debbie's experience and attention to her clients' needs make the process as comfortable and enjoyable as possible. She divulges her strategy for ensuring every inch in the kitchen has a plan and purpose. "Working with custom cabinets allows for maximizing storage space," she says. "For example, pull-out drawers, custom spice racks, appliance garages and open shelving can be utilized to make the most of the kitchen space."

Based in New Canaan, CT, Debbie Jackson Interiors proudly serves clients looking to transform their home. She and her team are pleased to create any style their clients desire—always with elegant results.

Resource:

Debbie Jackson Interiors
 Debbie Jackson, Owner
 New Canaan, CT 06840
 917.705.7164
debbiejacksoninteriors.com

LEICHT KITCHENS
GORAN SAVIC





Interior designer Goran Savic has more than 21 years of experience creating superbly designed spaces. An impressive portfolio with Leicht Westchester showcases his talent and natural gifts for producing the highest quality kitchens. While many skillful designers offer a plan to improve a space, what sets Goran apart is his ability to connect deeply with his clients. Knowing that transforming a kitchen can be exciting and life-changing for a family, Goran honors the process and values the vital relationships he develops while creating spectacular spaces.

This balance and collaboration mean that the finished project is both aesthetically immaculate and a wonderfully personal reflection of the client. This is evident in this Modern Elegance kitchen that Goran designed in a home nestled in a tree-dense wood in Chappaqua, NY. The client had asked Goran to make the inside space feel organic by bringing the look of high-quality, natural materials inside. The kitchen is clean, graceful and upbeat with a touch of fun color—emulating the busy family that lives there.

The contemporary home needed a kitchen that would blend seamlessly with the house in terms of style. Smooth, high-gloss white cabinets maintain a clean, modern look while allowing the ample windows and natural beauty of the outside to take center stage. Goran chose to situate the large window over the sink so the client would enjoy a picturesque view while standing there.

Goran explains how he thoughtfully planned out the limited area to look spacious and be exceedingly functional. This active family with children needed an unobstructed flow from the refrigerator, to the sink, to the food prep area, to the cooking station. Planning this zone away from the generous seating options was key, ensuring that





family members and guests can relax and enjoy themselves while the cook remains free to move around. “The fridge, freezer, pantry and oven are grouped together,” he says. “In this specific kitchen, I wanted to make sure there was a flawless flow. All the cooking work is happening in that corridor, and the family can sit at the island, enjoying their space.”

One way this modern kitchen stands out from others is with its imaginative mix and use of materials. “We wanted to do a different breakup of materials,” says Goran. “The wood accents are inside the glass display, plus the island is both wood and quartzite.” Goran also personalized this space by listening to the clients’ ideas about incorporating pops of color. A special request of the homeowners: the burnt orange pendants and sea-foam-green chairs, which bring whimsical fun and add visual interest. An especially family-friendly feature that Goran designed is a soft channel of light that gently illuminates the kitchen when the main lights are out: perfect for little feet padding into the room for a late-night refreshment.



Everything within this space needed to be attractive and highly durable for a family that spends a lot of time cooking and relaxing in the kitchen—and Goran succeeded in achieving this objective. The kitchen is a sight to behold and a fine accomplishment on the part of acclaimed designer Goran Savic and Leicht Westchester.

Resource:

Leicht Westchester
Goran Savic, Designer
 200 E Main Street
 Mt Kisco, NY 10549
 914.218.3433
leichtwestchester.com

11 East Putnam Avenue
Greenwich CT 06830
 203.340.9933
leichtgreenwich.com

CALIFORNIA CLOSETS
KATIE ZANZAROV





Photo by Stefan Radtke

Imagine walking into your kitchen to find your counters clear and everything neatly in place, easily accessible and highly organized. That's the specialty service offered by California Closets designer Katie Zanzarov, who can help transform your kitchen so it's not just free of clutter, but is an absolute pleasure to work in. With a Bachelor of Science degree in textiles, merchandising and design and over 11 years of experience, Katie understands interior design and home furnishings, and she enjoys making her clients' lives better by listening to their wants and needs.

Katie spoke with *Design + Decor* about how she discovers what a home might need in terms of kitchen organization. "Pantries can be challenging because they are typically accessed before every meal, whereas a closet is needed usually once a day," she says. "I always find out what a family's needs are. I ask what their frustrations are and what problems they are looking to solve." Once Katie knows the client's functional goals, she can determine the aesthetic and style to use.

Different clients store different kinds of items in their pantries. Flour, sugar, canned goods and grains might be one family's essentials,



Photo by Stefan Radtke



Photo by Stefan Radtke



Photo by Stefan Radtke

while another client who utilizes the kitchen for entertaining and prefers to order takeout might use the pantry for luxury dishes and fine glasses. “We get a general sense of what we have to create a place for while making it very personalized,” says Katie. “Housing the client’s favorite bakeware or creating a wine bar or coffee bar is a possibility—it doesn’t have to revolve around cooking.” Some clients even request a little desk space within their pantry.

A pantry space can be personalized to reflect the homeowners’ needs and wishes in the most creative of ways—the possibilities are exciting and infinite. “One of the most important features that a pantry needs is flexibility,” notes Katie. “Adjustable shelves can be helpful and can be modified depending on your family’s changing needs. I recommend pull-out storage to avoid having to dig deep for the olive oil and other items; it also allows an unobstructed view of your items. Drawers are always good, but they lend themselves to getting messy. Pull-out baskets can be great, especially for children, giving them quick access to snacks. The right depth of shelving is important, too, because you want to have enough room, but no wasted space.”

Transforming a kitchen space from chaotic to beautiful and orderly is a fulfilling job for Katie. “I always love hearing a client’s personal stories and how much gratitude they have after we’ve organized their home,” she says. Her warm and friendly personality makes it easy for homeowners to share their kitchen stresses and frustrations with her. Katie has seen it all, and she knows how to handle the challenge of creating a more attractive and well-managed environment.

California Closets offers an initial consultation to discuss how the firm can help organize your house or apartment. It uses 3D computer-aided design software so clients can take part in the creative process. Need more space for your Flora Danica dinnerware? Using her experience, talent and ingenuity, Katie will ensure all your precious items and accessories look showroom ready.

Resource:

California Closets
Katie Zanzarov, Designer
 16 Saw Mill River Road
 Hawthorne, NY 10532
 914.592.1001
californiaclosets.com

KAREN BERKEMEYER HOME
KAREN BERKEMEYER
IRIS MICHAELS





Karen Berkemeyer Home has a winning team of outstanding and accomplished designers. Experts in cabinetry, tile and stone, interior design, countertops and plumbing, they offer a one-stop shop for all your luxury kitchen and bath needs. The combined experience of these industry professionals means your project will be precisely designed and quickly executed, and will exceed all expectations.

The acclaimed owner and principal designer at KB Home, Karen Berkemeyer, is proud to introduce our readers to Iris Michaels, one of her talented and experienced designers. Iris has been a team leader at KB Homes for more than 21 years, and has over 30 years of design experience. Her signature style is imaginative and clean, and can be viewed on the KB Home website on Iris' designer page.

Karen and Iris show us a kitchen that Iris designed in Rye, NY, which they fittingly call the "Rift-Cut Contemporary" because of its exquisite rift-cut





oak cabinetry. It's a spacious kitchen with a generously large island, offering plenty of seating for family and entertaining. Seamlessly hidden away is a wine and coffee bar that, when opened, offers an enchanting surprise in the beautiful, delicate tile adorning the nooks. This project features three unique tile selections that complement each other perfectly, along with white and warm oak cabinets. Corian countertops look spectacular and offer a pleasant feel to the touch.

Asked what comes to mind when she hears the term "designated, well-planned kitchen," Iris says, "It's interesting that a designated kitchen today includes a pantry and sometimes a separate coffee bar. Often, homeowners don't want to see many appliances, so we work to make it ideal and beautiful as well."

Making a kitchen functional and beautiful for the family that will use it is a true partnership between the designer and homeowner. How does Iris ensure that her design will reflect the unique personality of the clients? "We discuss who lives in the home and how many children there are. Does the family enjoy cooking and/or baking? I also ask if they would like a separate area for a coffee station and a bar area; we can design a space for it."

Iris says it's also important to know whether the main cook is right- or left-handed, as this helps guide the location of kitchen essentials. "Some people like open shelves, some people like closed shelves," she adds. "Asking a lot of questions is important, as well as listening closely to the homeowner's wish list."

All kitchens are different, and if designed well they are fantastic reflections of the clients' desires and requirements. We asked Iris if she ever stepped outside the restrictions of what a traditional kitchen looks like to meet a client's needs. Her answer was inspiringly uplifting. "I once designed a kitchen in Westport for a client with multiple sclerosis," she recalls. "The client needed to be in a wheelchair but still enjoyed cooking, so we made a space so she could sit at the cooktop. We put a sink and a faucet very close to the cooktop; she was able to do the prep work as well. We placed a microwave close to the countertop, right behind the cooking area, so she could easily turn around in the wheelchair. We made sure she was always comfortable and didn't have to bend over to reach things. Also, in front of a big window, we created a large crafting desk so she could enjoy activities easily without objects rolling away. It was a wonderful experience to design that kitchen."

This lovely Rift-Cut Contemporary kitchen is truly spectacular in its crisp lines and color choices. "It's just a great, beautiful room with lots of furnishings," says Iris. Indeed, this kitchen is an aesthetic charm and a testament to talents of designer Iris Michaels and Karen Berkemeyer Home. The expert team undertakes a wide variety of projects—from simple upgrades to highly complex designs—and ensures that the finished result will be exquisite and flawless.

Resource:

*Karen Berkemeyer Home
Karen Berkemeyer, Owner & Principal Designer
Iris Michaels, Kitchen Designer
175 Post Road West
Westport, CT 06880
203.454.0032
karenberkemeyehome.com*



PREWAR MODERN ON PARK AVENUE:

A Collaboration for the Ages

An outstanding design team works together to integrate two separate apartments into one magnificent dream space for a family.

Story by Danielle Porter | Photography by Bjorn Wallander



The formal living room space has an array of seating to accommodate any size gathering. The sun-drenched space highlights the importance of integrating both natural and modern artificial lighting throughout the home.



In 2015, the design team at Foley & Cox had the opportunity to collaborate with the owners of this apartment on Park Avenue in New York City to transform their “classic six” into a home fit just for them. With two young children, the couple led an active life and wanted the home to support their love for entertaining and spending time together as a family.

The clients were thrilled with the outcome of that effort, so it’s no wonder that, only a few years later, when the family acquired the adjacent apartment, they asked the collaborative team of interior designers Foley & Cox, architect Douglas C. Wright and contractor Donadic, Inc. to once again partner with them to integrate the two apartments into one and create their ultimate Park Avenue dream home.

For this new venture, the design team expanded to include lighting designer Tirschwell & Co., Inc. and art consultant Delancey and Greene Art Advisory. The synergy that came from this collective as they embarked upon the design of this home is otherworldly, as evidenced by the final product: a home that is “respectful of its classic Park Avenue location and prewar traditions, but updated to reflect a new generation,” as Michael Cox, Principal at Foley & Cox, so eloquently describes it.

Creative Freedom

Wanting to combine the spaces and convert the current open living space into a more formal, classic floor plan with mod-



This home office with a view anchors the end of the living room with ample daylight and custom, built-in bookcases.



The central sitting area in the living room features two organic sofas that encourage conversation around a stone coffee table.



This custom-made rosewood cabinetry from Paris is a stunning feature adjacent to the dining room.



ern upgrades, the clients put their complete trust in the recommendations of the design team. As the newly acquired apartment hadn't been renovated in nearly three decades, the team was given carte blanche to reimagine it as they saw fit.

Empowered by the clients' trust and the creative freedom to plan the combined home accordingly, the design team envisioned a thoughtful progression of space. Social, entertaining spaces were placed near the entry at the front of the home, while the more private living quarters were placed at the rear, with intentional and noninvasive separation between.

This approach gave the apartment experiential meaning and allowed the team to create the sense that the two apartments had always been one. The layout also gives guests the sense that they are welcomed openly into the entire home, while subtly holding space for only the family to enjoy—the ultimate entertaining home.

Setting the Tone

At the entrance of the home, the simple and sophisticated foyer sets the aesthetic tone for the residence, a neutral backdrop upon which layers of personality and character can be built uniquely into each space. Here, the floor is a classic marble stripe, accentuating the symmetry of the space, which is starkly contrasted by a striking piece of neon art commissioned from Iván Navarro, which doubles as a secret door.

This moment is only the beginning of an immersive and art-infused architectural experience. Indeed, according to Douglas Wright, Founder of Douglas C. Wright Architects, this element is a pivotal representation of the collaboration among the team members. "This piece knits together the traditional past and modern present within the home," he says. "It extends the grandness of the foyer experience using a highly artistic piece for a very mundane solution of concealing the entry closet."

Adjacent to the foyer is an expansive, daylight-filled living room space that has been meticulously separated into three sitting areas. These areas are a thoughtful interpretation and microcosm of the home, with more formal, social and "public" space at the front and more casual, personal space at the back.

First, and closest to the foyer, is a classic formal space where the traditional seating arrangement and glossy ottoman align on a central fireplace. The game table anchored in front of the corner window is a weekly point of gathering in the home. Centered in the space is a gentle and fluid seating area, where curving sofas create an intimate conversational space, perfect for cocktail parties with close friends. Anchoring the far end of the space is a tailored, open home office with casual guest seating. Within these three spaces, the immersive art experience continues, as the lighting design is simultaneously a sculptural experience emerging from the ceiling. As Michael Cox explains, this approach with the lighting "delineates zones from modern glamour to sophisticated urban living paired with comfort and functionality."



Fit for a chef, the kitchen space has everything the family could want. The statement island and frosted-glass pendant anchor the space, with white and glass cabinets beyond.



What was once the primary bedroom suite has been transformed into the dining room and the “jewel box”—a built-in bar experience like no other. Connecting the open private office and the dining room, this space supports dinner and cocktail parties perfectly. The materiality is simply inspired. The rosewood bar is custom designed and imported from Paris-based Rinck.

An Artful Experience

The formal dining room is an elegant space with an undercurrent of soft, curving lines that draw the eye through the space. Here, we see the eloquent expression of how art has been incorporated as an inherent component of the design, a testament to how seamlessly the architect, interior designer and art consultant worked together to bring the space to life. The art isn’t just meaningfully expanding the family’s collection—it’s adding to the experience of the home.

The bold azure artwork by Donald Martini is highly dimensional, adding a sense of depth to the space in a color that is in perfect contrast to the white, hand-plastered walls of the dining room. The light fixture by Mathieu Lehanneur is a whimsical piece where light and art converge. Tubes of light seemingly flow in and out of the ceiling, evoking a sense of intrigue.

The kitchen space is crisp and clever in its design. A bold statement island anchors the space, surrounded by white cabinets with sleek glass inlay doors that are perfectly matched to the central pendant fixture. Adjacent to the kitchen is a breakfast nook grounded with a striped, woven leather and coordinating



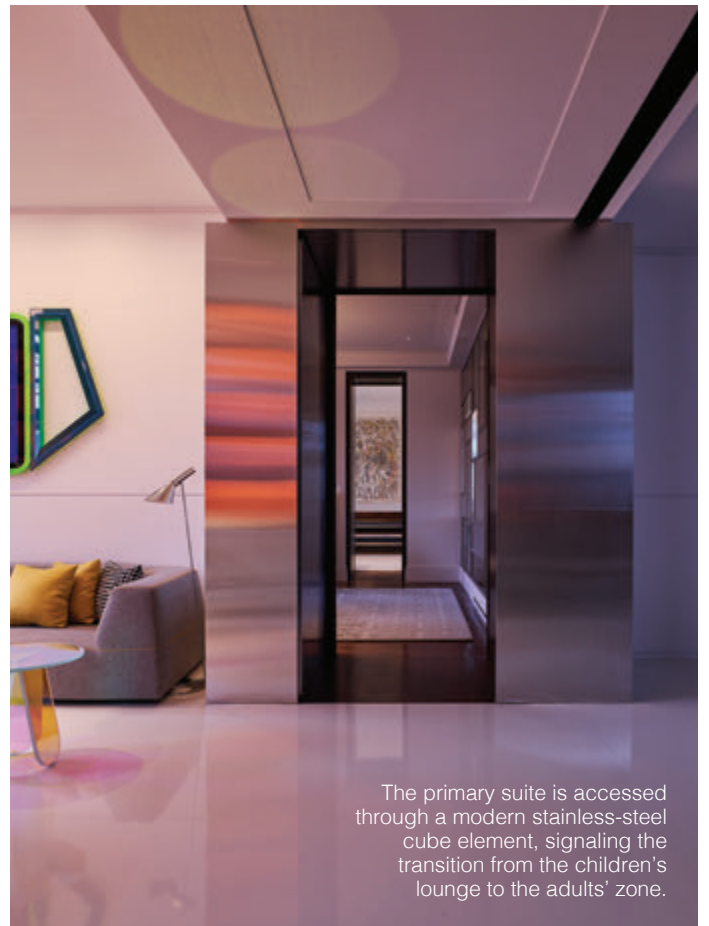
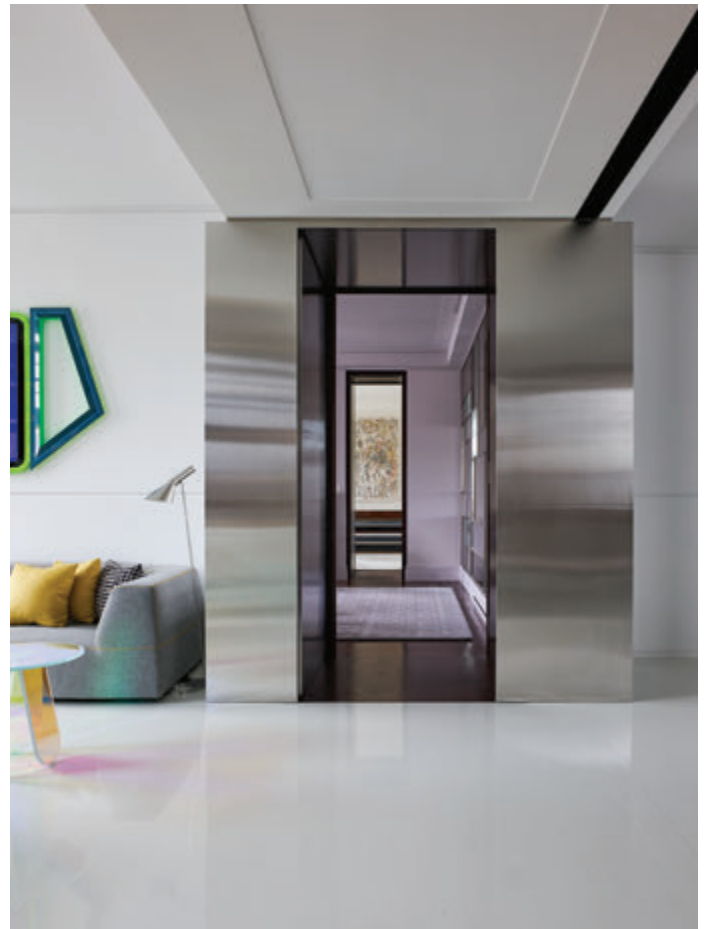
chocolate leather seat, with an expansive ship's table to fit the whole family. The nook itself offers a view of the more informal living room, perfectly rounding out the more public and social spaces of the home. From here, just beyond the pocket door that stores neatly in the wall, lies the family's personal space, bedrooms and beyond.

The Children's Zone

While the two children's bedrooms stayed in place for the renovation, each received an upgrade reflecting the children's maturation and growth. This was a flawless effort given the intentionality of the neutral backdrop of each room, upon which a bit of personality can be placed with consideration to their individual personalities and interests. Bold colors and oversized artwork are thoughtfully combined to make youthful spaces that can mature as the children continue to grow.

It is here, at the end of the hallway, that another pocket door lies, where walls used to divide the two apartments. This pocket door connection finishes the hallway, making a seamless connection to the children's lounge and study space. Complete with built-in reading nooks with a view, a lounge space and a storage area, it's





The primary suite is accessed through a modern stainless-steel cube element, signaling the transition from the children's lounge to the adults' zone.



Featured in the primary sitting room, the organic sofa, coffee table and artwork are a stunning contrast to the modern cube that the couple enters to access their suite.



This custom glass wall features a variety of five hand-selected mirror styles to create a Mondrianesque feature.



the perfect hangout space for the kids and their friends.

Just beyond is an artful architectural transition from the children's zone to the primary suite. It is an "experience through materiality—a stainless cube passageway, with a rotating door lined in wood panels, which marries modern and transitional design," says Michael, and it creates an intentional transfer between spaces. A peek through the cube offers a view directly through space to an art piece in the primary bedroom beyond.

Where Dreams Come True

The primary suite is an overall composite of geometric and organic elements fusing together to create an experience like no other in the home. The sitting room features a Piet Mondrian-inspired wall that provides the perfect combination of glass and mirror, selected by the collective design team. Here, an organic sofa gently wraps around a sculptural coffee table, creating the perfect scene for morning coffee and conversation. A metallic framed fireplace, artwork in itself, offers a juxtaposition of cold metal against a warm fire, where the couple can wind down over evening cocktails.

Just beyond the sitting room, behind a pair of wood doors, lies the primary bedroom. This light-filled, bright and airy corner space has the bed anchored on the interior wall, providing a restful retreat with a view. Off the primary bedroom, tucked behind

the last door of the home, lies an unexpected luxury: the ultimate his and hers primary bath and dressing room suite.

Here in the bathroom is an experience to die for. A curated collection of vanilla onyx and white marble clad nearly every surface, reflecting light and luxury everywhere you look. The central, oversized walk-in shower, complete with rain shower head anchored at the ceiling, is enclosed with a beautiful gradient frosted glass flanked by his and hers vanities in cerused oak.

These softly curved vanities define a zone for each person, and the mirrors reflect the Mondrianesque glass wall in the sitting room, adding depth and detail to the space. Each exquisite vanity is paired with its own private toilet room, the ultimate in his and hers. The space is finished off with an extensive dressing room and behind-the-scenes closet space—the stuff of New York City dreams!

Collectively, this home is a thoughtfully curated experience that artfully respects the traditional prewar design characteristics and integrates the best of modern beauty and convenience. It is a shining example of the indescribable excellence that comes to life from the collaboration of diverse and brilliant minds who brought their expertise and A-game to this design, merging their skills impeccably to create the dream space that this family calls home.





With corner views, the primary bedroom is the most private space in the home, with a soft palette layered onto crisp white walls and traditional ceiling details.



As seen from the dressing room, the expansive shower is central to the his and hers vanities and screened with a subtle frosted glass.

Resources:

Interior Design:

Foley & Cox

Michael Cox

231 West 29th Street #707

New York, NY 10001

212.529.5800

foleyandcox.com

Architect:

Douglas C. Wright Architects

Douglas C. Wright

1261 Broadway #400

New York, NY 10001

212.343.0034

dcwarchitects.com

Contractor:

S. Donadic, Inc.

Johnny S. Donadic

45-25 39th Street

Long Island City, NY 11104

718.361.9888

donadic.com

Art Consultant:

Delancey and Greene

Liz Sterling

Chapin Carson

Jordan Pieper

980 Madison Avenue, Third Floor

New York, NY 10075

212.535.5096

delanceyandgreen.com

Lighting Design:

Tirschwell & Co.

Matthew Tirschwell

David Burya

21 West 39th Street

New York, NY 10018

212.563.0994

t-ld.com

Millwork:

Rinck, Inc.

Valentin Goux

200 Lexington Avenue, Suite 422

New York, NY 10016

rinck.fr

Mechanical Consultant:

CES and Engineering

James Senatro

Sam Masciulli

216 East 45th Street, 16th Floor

New York, NY 10017

ceseng.com



Vendors:

Living Room light fixture: Leo Constellation by Blackman Cruz
 Blackman Cruz
 836 North Highland Avenue
 Los Angeles, CA 90038
 323.466.8600
 blackmancruz.com

Living Room pair of curved sofas: Sofa 240 by Pierre Augustin Rose
 Studio Twenty Seven
 241 Church Street
 New York, NY 10012
 917.225.4901
 studiotwentyseven.com

Dining Room lighting fixture: Les Cordes 12 Tubes by Mathieu Lehanneur
 Carpenters Workshop Gallery
 693 Fifth Avenue, 19th Floor
 New York, NY 10022
 215.829.0610
 carpentersworkshop.com

Dining Room Host/Hostess chairs: Ella Chair by Paul Mathieu
 Ralph Pucci
 44 West 18th Street, 12th Floor
 New York, NY 10011
 ralphpucci.com

Dining Room side chairs: Brava Dining Chairs by Holly Hunt
 Holly Hunt
 979 Third Avenue, 5th Floor
 New York, NY 10022
 212.755.6555
 hollyhunt.com

Primary Sitting Room Fireplace: Marble Crafters
 Marble Crafters
 11 Neally Boulevard
 Trainer, PA 19061
 610.497.6000
 marblecrafters.com

Primary Sitting Room Area rug: Arcata Rug by Merida
 Merida
 200 Lexington Avenue, Suite 500
 New York, NY 10016
 646.736.0275
 meridastudio.com

Primary closet rug: Custom rug by Keleen Leathers
 Keleen Leathers
 1010 Executive Drive, Suite 400
 Westmont, IL 60559
 601.590.5213
 keeleenleathers.com

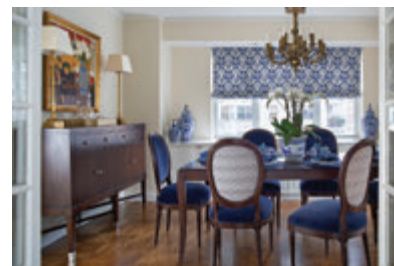
Upholstery and window treatments throughout
 DeAngelis
 262 Glen Head Road
 Glenhead, NY 11545
 deangelisltd.com

Flowers throughout
 Zeze Flowers
 938 First Avenue
 New York, NY 10022
 212.753.7767



A TIMELESS APPEAL

The eclectic design work of Diane Durocher Interiors
Story by Hunter Powell



The team at Diane Durocher Interiors (DDI) can handle any style of interior design. Whether it is time-honored traditional design or modern contemporary design, the studio always succeeds in capturing a client's personality and creating interiors that are truly timeless. The core principle of the studio is "Our surroundings enhance our lives," and Diane's impressive portfolio reflects this belief.

Diane got her start as a professional interior designer 31 years ago. What began as pure passion, collaborating with her husband's general contractor work, became a career path, with Diane returning to school to earn a degree in interior design. She officially opened DDI in 1996. When asked what sets her apart as a designer, Diane says, "My education, experience and willingness to work within the clients' budget and timeline, while incorporating their design aesthetic, including their existing treasures. I believe in reupholstering,



refinishing and repurposing whenever possible.”

DDI is based in Diane’s beloved home state, New Jersey, but her studio has worked as far south as West Virginia and as far north as Connecticut. “It’s more about my relationship with the clients than where they live,” she says. Her wide array of design experience has enabled her to keep up to date with design trends, including the need for more practical interior design. “The trend is for more casual, multi-use rooms,” she says. “Long gone is the formal—look, but don’t touch! In our more ‘formal’ rooms today, we incorporate comfortable and durable fabrics that beckon you to sit and stay awhile.”

Diane’s process for every project is to be transparent with her client, and her biggest goal is to prioritize the client’s needs. “We are a team from the very beginning of the process,” she says. “As interior designers, our job is to design for our clients—their taste, their palette choice—with our expertise ensuring that the project runs smoothly, and with the goal of exceeding their expectations.” That team-focused mentality is key as she takes the project through each step of the process. From the initial design consultation to the completion phase, Diane’s clients are always at the forefront.

When asked what she is most proud of in her career, Diane



mentions her time spent mentoring the next generation of designers. As a heavily involved member of the American Society of Interior Designers—New Jersey, Diane’s studio has taken on a number of design interns over the years. “My ability to inspire the next generation of designers is what I am

most proud of,” she says. “During my 30 years as a designer, I have mentored and had numerous students intern with us. As an added bonus, they inspire me.”

After her many years of experience, Diane has nothing but confidence in her work. The one thing that does not come easy for her, however, is choosing a favorite project from her storied career. “How do you select a favorite child?” she says. “I love what I do and enjoy each and every project!” That love shines forth in every space Diane touches.

Resource:

Diane Durocher Interiors, Inc.
Diane Durocher, ASID, IIDA, CAPS, CID
375 South Central Avenue
Ramsey, NJ 07446
201.825.3832
dianedurocherinteriors.com



AlbaSTONE

Total Custom Stone Fabrication Center
Experts in Stone for Kitchens, Baths, Fireplaces

62 Viaduct Road Stamford, CT 06907
(203) 658-8233



LEICHT®

GERMAN ARCHITECTURAL KITCHENS

Westchester | 200 E Main St, Mount Kisco, NY 10549 | 914.218.3433

Greenwich | 11 E Putnam Ave, Greenwich, CT | 203.340.9933

www.leichtwestchester.com

KITCHENS | VANITIES | CLOSETS | PANTRIES | OFFICES | LIVING ROOM

Interior design: @danielhasson | Photography: @odedsmadar